

The Claytonite

Inside this issue:

Meet Your Staff	1
Royer Cemetery Temporarily Closed	1
Yard Waste Site	2
Burning Garbage: A Problem in Our Community	2
Noxious Weed in Clayton	3
Public Safety Announcement	4

Meet Your Staff

The Town of Clayton would like to introduce Mike Pfankuch, the new Public Works Foreman.

Mike was elevated to the position of Public Works Foreman on May 15, 2017 after having served the Town of Clayton as a part-time seasonal employee for several years.

Mike's background includes construction and large equipment operation, through which he was involved in the construction of State Highway 10 as we know it today, among other projects.

Mike has also worked

as a Property Assessor with M & K Assessments, LLC.

Mike's diverse background and skill-set is sure have a positive impact on the Town of Clayton. He brings a "can-do" attitude and enthusiasm which is inspiring and contagious.

The transition of staff has caused several projects to fall behind schedule. Mike and the Public Works Crew have been working diligently to catch-up on

these projects, as well as, regular maintenance throughout the Town. Your patience is greatly appreciated.



Royer Cemetery Temporarily Closed

Royer Cemetery has had significant damage due to the storm on Wednesday, June 14, 2017.

The Cemetery is closed to public access at this time. The Town is working to clear trees, and to repair and restore the cemetery as quickly as possible. We appreciate your patience.





Town of Clayton Yard Waste Site

HOURS OF OPERATION

Thursdays:
3 to 7 p.m.

Saturdays:
8 a.m. to 4 p.m.

Sundays:
Noon to 4 p.m.
(Closed on Holidays)

Yard Waste Site

The Town of Clayton continues to operate the Yard Waste Site located at the corner of Hickory Avenue and County Road II.

The site is open and available for residential yard waste disposal from April 1st to November 30th each calendar year.

HOURS OF OPERATION

Thursdays:
3 to 7 p.m.

Saturdays:
8 a.m. to 4 p.m.

Sundays:
Noon to 4 p.m.
(Closed on Holidays)

The Public Works Department operates the site to serve Town of Clayton residents, however, their equipment and resources are limited. We appreciate your cooperation in only disposing of accepted yard waste.

ACCEPTED MATERIALS

- Grass Clippings
- Leaves
- Brush, Sticks, and Branches
- Logs up to 4" diameter
- Logs and Stumps larger than 4" diameter
- Appliances and Electronics

UNACCEPTABLE MATERIALS

- Tires
- Construction materials including but not limited to:
 - * Lumber
 - * Bricks
 - * Pavers
 - * Cinder Block
 - * Shingles
 - * Siding

Site attendants are authorized to allow or disallow materials on a case-by-case basis.

Because funding for the Yard Waste Site comes from Town of Clayton tax dollars, use of the site is limited to Town of Clayton residents only. NO commercial disposal is permitted.

Burning Garbage: A Problem for Our Community

What's so bad about burning garbage?

It's unhealthy. If you burn garbage, we will all breathe and eat it, because smoke and ash pollute the air, water and food supply.

It's unsafe. Burning garbage or brush leads to wildfires, property damage and sometimes loss of life.

It's a nuisance. The smoke and ash smell, and irritate eyes and lungs. It's especially bad for people with asthma or heart disease.

But we've burned for years...

Garbage has changed in the last 50 years. Today's garbage contains plastics, dyes and other chemicals that release hazardous toxins when burned. Many of these materials were not around a few decades ago.

The pollutants from burning today's garbage cause many health problems, especially for kids and anyone with asthma or trouble breathing.

Alternatives to burning

- ✓ Recycle paper, cardboard, bottles and cans.
- ✓ Compost leaves, grass clippings, small brush and vegetable food scraps.
- ✓ Donate or reuse old clothes, furniture and other household items.
- ✓ Send waste that can't be reused, recycled or composted to the landfill. Get a Dumpster for large amounts of waste, such as agricultural plastics and construction and demolition debris.

<http://dnr.wi.gov/files/PDF/pubs/wa/WA1373.pdf>



Noxious Weeds in Clayton

A local resident recently alerted Town of Clayton Staff that he believed an invasive species of plant, Giant Hogweed, was growing in several areas of the Town.

Staff took immediate action and contacted the WI DNR Winnebago County Forester Tom Vanden Elzen and requested confirmation.

Mr. Vanden Elzen did a local survey of the areas indicated to have the invasive plant. His determination was that the plant is NOT the species suspected, but rather a native plant of Wisconsin, Cow Parsnip.

Cow Parsnip is a relatively common plant that grows from 3-10 feet tall. Its leaves are 12"-18" and rough and hairy. The leaves are divided into 3 segments, with coarsely toothed leaflets and a broad wing at the base of each leaf stalk. Stems are rough, hairy, hollow and grooved. It has white or cream colored flowers with a sweet fragrance. Flowers have 5 petals of different sizes and are arranged in broad, flat-topped clusters at the top of short stalks which bloom in mid-summer.

The danger of Cow Parsnip is the sap of this plant, which contains a phototoxin that reacts with ultraviolet light to cause skin irritation ranging from a mild rash to severe blistering. Contact with it should be avoided.

Additionally, during Mr. Vanden Elzen's survey, he positively identified another invasive species growing in the area, Wild Parsnip.

A large plant that stands erect at 2-5 feet tall. Its leaves are alternate, pinnately compound, branched, and have saw-toothed edges. Each leaf has 5-15 ovate to oblong leaflets with variable toothed edges and deep lobes. Stems are hollow and deeply grooved. It has small, 5-petaled, yellow flowers that are arranged in a flat-topped broad umbel 2-6 inches across and flowers June-September. The flowers produce a round, smooth, straw-colored seed pod. Wild parsnip has a long, cone-shaped fleshy thick taproot.

Some people are sensitive to the plant and soon develop a rash if their skin contacts the leaves or plant sap in the presence of sunlight. A very painful

rash can develop that in some people leaves scars that can persist for several months or longer. Wild parsnip is most irritating during flowering. Contact should be avoided.

Mr. Vanden Elzen noted that both plants are common to our area and are often found along roadsides, field edges, woodlands, and waterways. He recommended avoiding direct contact with either species.

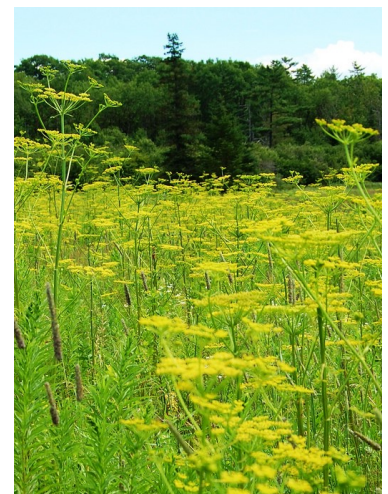
The following websites provided much of the factual material for this article, as well as other information of interest. We encourage you to explore them further.

<http://dnr.wi.gov/topic/invasives/>

<https://www.dot.ny.gov/dangerous-plants>



Cow Parsnip

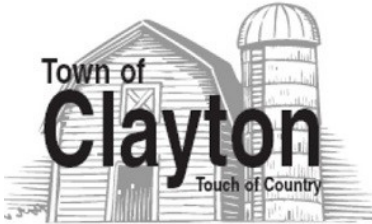


Wild Parsnip

Cow Parsnip and Wild Parsnip are showy, invasive plants with toxic sap that can burn the skin.

Town of Clayton
8348 County Road T
Larsen, WI 54947

Phone: (920) 836-2007
Fax: (920) 836-2026
Email:
tocclerk@new.rr.com



Find us online:
www.townofclayton.net



Public Safety Announcement

The severe storms which moved through our area on June 14th are a impactful reminder of the need to have an emergency plan in place in order to keep ourselves, our family and our friends safe.

We, at the Town of Clayton, would like to remind everyone that the danger is not over when the storms pass.

During the recent storm, trees and live power lines were downed at several locations around the Town. Our Public Works

Crew and Emergency Services personnel were on scene almost immediately to close the areas of road which were affected.

Despite our efforts to keep everyone safe by blocking the dangerous areas, we encountered citizens who took it upon themselves to move the barricades and proceed to drive over the power lines. Fortunately, no one was hurt...this time.

We would ask that everyone keep safety in mind. If a road is post-

ed as "closed" and there are barricades blocking access, it is for a specific reason which may or may not be apparent. While we understand this can sometimes be inconvenient, it is for your own safety. Please do not, for any reason, move a barricade or enter an area which has been closed to public access.

Your cooperation is greatly appreciated!