



TOWN OF CLAYTON

News from the Town Chair

Hello to all:

Summer is here, and that means it's time for our State's official tree to pop up all over, that is the dreaded orange barrels and cones. It's road construction season.

In our town we have a couple of capital improvement projects just beginning. One is the second and final construction in the Ridgeway Heights subdivision, which involves Ridgeway Drive and East Ridge Place. We are working with the cooperation of the Ridgeway Country Club to address drainage issues that have plagued this area for many years. The project involves reconstruction of the ditches and resurfacing of the road. The second is the reconstruction of Braun Court, which includes ditch work to correct drainage issues and the resurfacing of the road. Both projects are planned to be completed by early fall. I want to thank all of our residents that will be inconvenienced by these projects in advance for your understanding and cooperation through-out the road construction process.

Hopefully everyone had a chance to attend last week's 13th Annual ClaytonFest. This was the first year that the event began on Friday evening and continued Saturday afternoon and evening. Even though we had rain showers come through late afternoon on Saturday, which unfortunately required a cancelation of our fireworks display, the event was again enjoyed by all attending. I want to personally thank the Drifters Snowmobile Club for their coordination efforts and the work of all of their volunteers before, during and after the event. I also want to thank all of the other volunteer organizations that participated, the many individuals and businesses that either made donations or furnished services, and our Town of Clayton staff. ClaytonFest was again successful because of all of these individuals, along with the support of our community.

I hope everyone has a safe and fun summer.

Mark E. Luebke Town of Clayton Chair

Wisconsin Winter 2013-2014

After experiencing the polar vortex of winter we are all finally welcoming summer along with some rain and humidity! Wisconsin ranked the 5th coldest State from December 2013 through February 2014 which was the coldest such period for the contiguous 48 dates as a whole since modern records began in 1895. Local schools were shut down for below zero temperatures. Also, winter snow records were the 10th largest on record since 1966. Wisconsin, Michigan, Minnesota, Iowa, Indiana, Illinois, and Missouri registered a top 10 coldest winter. The number of record daily low temperatures outnumbered the number of record high temperatures in early 2014. The southern states suffered from lack of rain and an outbreak of wildfires. In Wisconsin we have three seasons: bitterly cold, humid and construction!



Inside this issue:

Word Find	2
Election Green Space	3
Emergency Kit Yard Waste /Mowing	4
Plan Commission	5
Controlled Burn Crossword Answers	6



Word Search

A	L	U	S	W	I	M	J	H	N	Z	B	V	S	H
B	O	R	D	Q	W	I	F	M	P	O	R	E	U	Q
E	I	D	A	O	P	O	O	L	G	O	F	M	B	D
H	G	K	M	I	R	D	E	S	K	U	I	S	J	F
Y	T	X	E	P	N	I	U	L	R	D	X	B	A	L
L	E	J	O	V	B	E	P	Q	C	W	N	U	W	O
F	D	W	S	A	N	D	M	Y	E	I	Q	G	K	W
N	I	V	B	L	E	R	T	E	A	G	S	S	Y	E
O	D	P	Z	O	I	J	E	N	W	M	A	P	B	R
G	A	I	H	D	O	E	S	I	J	E	K	X	O	U
A	U	T	E	T	L	W	N	Z	X	L	C	W	J	P
R	X	C	R	O	C	S	U	B	E	O	U	G	E	T
D	O	H	Q	R	F	I	S	H	I	N	G	O	R	Z
C	X	U	Z	C	U	E	F	L	W	U	M	I	G	A
N	P	T	O	M	A	T	O	E	S	Z	D	T	K	X

RAIN

FLOWER

TOMATO

DRAGONFLY

SUNSET

POPSICLE

HUMID

SWIM

MELON

BIKE

SAND

DIRT

PITCH

FISHING

ZOO

TEA

CROCS

POOL

BUGS

RIDE

The Fall Election for the State of Wisconsin is Tuesday, August 12 2014.

We are in peak vacation time for many residents and sometimes it is difficult to get to the polls during this busy time. No problem! Here is the information regarding Absentee Voting! Under Wisconsin law, voters do not need a reason or excuse, such as being out of town on Election Day, to vote absentee. Any voter who prefers to vote by absentee ballot may request one. You have several options for requesting an absentee ballot and casting your vote.

Request an Absentee Ballot by Mail

If you are a registered Wisconsin voter, you can download the [Application For Absentee Ballot](#) (GAB-121). Just complete the form and mail it to your municipal clerk's office. Your application must be received by the clerk no later than 5:00 p.m. on the Thursday before the election in order for an absentee ballot to be SENT to you. If you are not already registered, you will need to [register to vote](#) before an absentee ballot can be sent to you.

Request an Absentee Ballot by E-Mail or Fax

Regular Wisconsin voters may also request that a ballot be sent to them by sending an e-mail or fax to their municipal clerk. This request must be made no later than 5:00 p.m. on the Thursday before the election in order for an absentee ballot to be SENT to you.

Options and Deadlines for Returning Your Absentee Ballot

U.S. Postal Service: Your completed absentee ballot must be postmarked no later than Election Day and received by the municipal clerk no later than 4 p.m. on the Friday after the election.

Other delivery (FedEx, hand-delivery, etc.): Your completed absentee ballot must be delivered to the municipal clerk no later than 8 p.m. on Election Day

In-Person at your Municipal Clerk's Office (Early Voting)

You can also vote absentee at your local municipal clerk's office. In-person absentee voting (also known as early voting) runs on **weekdays for two weeks before an election**, ending at 5 p.m. or the close of business (whichever is later) on the Friday before the election.

**In 2014, the dates are as follows: July 26 to August 8 (Partisan Primary)
October 20 to 31 (General Election)**



Green Space Committee

Our current project is updating Clayton Park. With a fresh coat of paint, new appliances and countertops the park should be looking like new!!! We are also keeping up on doing maintenance of the Wiouwash Trail throughout the summer. The Green Space Committee is still looking for a sixth committee member to serve on our board. If you are interested please contact the town hall. Meetings will now be on the second Wednesday of every month at 5:30 p.m.



**“Don't knock
the weather. If it
didn't change
once in awhile,
nine out of ten
people couldn't
start a
conversation.”
Kim Hubbard**

Emergency Weather Kit Preparation

**Gather the kit's items in easy-to-carry containers or duffel bags.
Put them within reach, near the exit you use most often.**

Check and update your kit at least once a year.

Your Emergency Supply Kit should include 3 to 14 days supply of the following items.

Remember the 3 Ps: Pills, Pets & Purses / Visit www.ready.gov for information

The Basics

- Water, one gallon of water per person per day for at least three days, for drinking and sanitation
- Food, at least a three-day supply of non-perishable food
- Battery-powered or hand crank radio and a NOAA Weather Radio with tone alert and extra batteries for both
- Flashlight and extra batteries
- First aid kit
- Whistle to signal for help
- Dust mask, to help filter contaminated air and plastic sheeting and duct tape to shelter-in-place
- Moist towelettes, garbage bags and plastic ties for personal sanitation
- Wrench or pliers to turn off utilities
- Can opener for food (if kit contains canned food)
- Local maps
- Cell phone with chargers, inverter or solar charger

Yard Waste Drop-Off Site

The Town of Clayton has a yard waste drop-off site located near the corner of Hickory and County Rd II. This location is open April 3 through November 30, 2014.

Thur. 3:00 pm to 7:00 pm

Sat. 8:00 am to 4:00 pm

Sun. 12:00 pm to 4:00 pm

(Except Holidays)



LOT/YARD MOWING

Town of Clayton's Weed Control Ordinance, Lot/Yard Maintenance Standards, Section 3.0 (2), Requires the following:

Any person owning, occupying, or controlling any lot or yard within a Recorded Subdivision Plat shall remove or cut untended and unmanaged weed or grass growth which has grown to a height greater than ten (10) inches.

And The Survey Says: Role of Certified Survey Maps

By Dick Knapinski

Plan Commission Chairman

One of the basic tools that towns use to help property owners use or develop their land is the certified survey map, commonly known as a CSM. These documents may at first appear complicated, but these official maps are essential to tell a multitude of things about a piece of property even years after the maps were approved and recorded.

This is a great help not only to town officials and board members, but to those seeking to purchase property. This is why a CSM is required for any property division, reconfiguration or development. It is a first step to maintaining consistency in what the town manages what happens to the land in our community.

Here are some examples from the past several years in Clayton where certified survey maps have helped clarify land boundaries, settles disputes, created new land parcels and helped set potential lands uses from residential to agricultural:



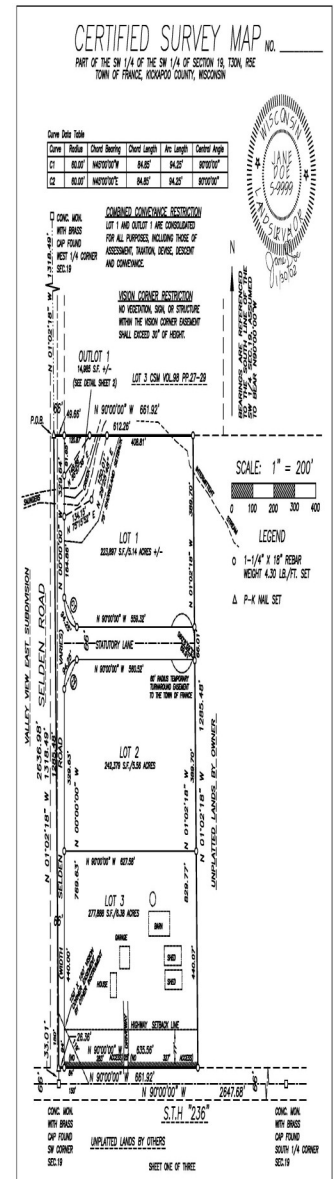
Landowner #1 has a five-acre parcel that he wants to divide into two lots for residential development. Roads border the five acres on two sides. Because a CSM includes any wetlands or streams on a property, it shows the most efficient use of the land would be a north-south split instead of the originally intended east-west division. This saved the landowner thousands of dollars and many headaches if he had tried to build with the original concept.

Landowner #2 wants to expand a storage building on one of two lots he owns and sell the other lot. A CSM shows that expansion of the building would cause the building to extend over the boundary between the two lots. That allowed the landowner to reconfigure the two lots to meet all town and county ordinances and prevent a potentially illegal building from being constructed.

Landowner #3 sells 40 acres of property that would eventually be developed into residential areas, but wants to have her family continue farming the remaining 120 acres. The addition of a “right to farm” notation on the CSM alerts potential buyers of adjacent lands about the agricultural uses, preventing land-use conflicts in future years.

While a CSM defines land parcels, it is merely a legal document. It does not describe what the future use of a property might be. The Plan Commission must recommend approval or denial of a CSM to the town board based on the legal boundaries and descriptions presented. The commission cannot recommend approval or denial of a CSM based on what a landowner might subsequently do with the property.

What a CSM does, however, is helps all of us – town officials, landowners and prospective landowners – to operate with a “no surprises” philosophy. It also allows both town officials and local citizens to ask questions on the impact of land divisions in their community.



Summer 2014

The Claytonite

A Touch of Country



TOWN OF CLAYTON

8348 County Road T
Larsen, WI 54947

Phone: 920-836-2007

Fax: 920-836-2026

E-mail:

tocclerk@new.rr.com

tocclerk@new.rr.com

CONTROLLED BURN

BEFORE YOU BURN...CALL 920-727-2890

By doing this, you have alerted Emergency Services that
You have a planned burn.

Make Sure You Have the Following:

Someone attending the fire at all times.

Enough water to put the fire out.

Someone attending the fire UNTIL the fire is OUT!

AFTER YOU BURN...CALL 920-727-2890



Fall 2013 Crossword Answers

ACROSS

3. FOUR (oops, should have been 43!)
5. WINCHESTER
7. BUDGET
8. GREENSPACE
9. DICK
12. ADVANCEDDISPOSAL
13. DOG
14. MUNICIPALITY

DOWN

1. JUNE
2. DRIFTERS
4. WEDNESDAY
6. LUEBKE
10. CLAYTON
11. ZONING